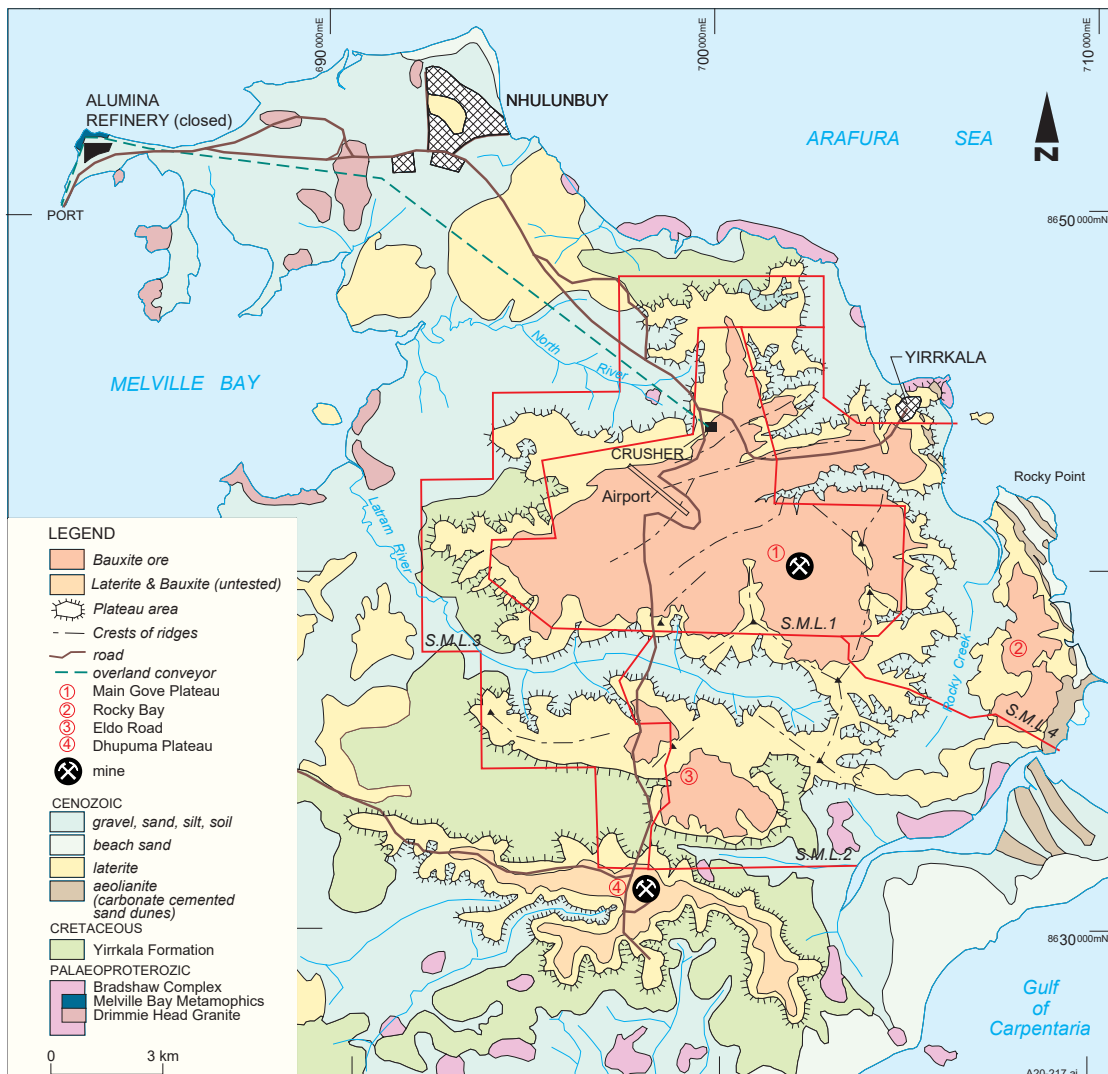




- Two bauxite mines are in operation near Nhulunbuy in eastern Arnhem Land.
- Gove Operations has been in production since 1971. Alumina production at Gove ceased in 2014, with the operation reverting to direct export of bauxite.
- Gibbsite bauxite at Gove averages 3.7 m in thickness and occurs in deeply lateritised, dissected plateau remnants overlying the Cretaceous Yirrkala Formation.
- The Dhupuma Plateau mine opened in 2017, and is owned and operated by the Aboriginal owned Gulkula Mining Company.
- Numerous additional bauxite occurrences occur along the northern coast of Arnhem Land and adjacent islands.

## Operating mines

Geological Province	Name	Annual Production	Resource	Company
Carpentaria Basin	Dhupuma Plateau	Average production rate of 0.7-0.8 million tonnes per annum	JORC resource not publicly announced	Gumatj Corporation Ltd
	Gove	11.6 Mt bauxite (2023 annual report)	67.4 Mt @ 49.7% $Al_2O_3$	Rio Tinto

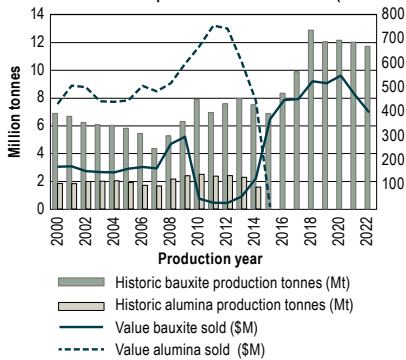


Simplified geology of Gove bauxite deposits.

Reference: Northern Territory Geological Survey, Report 13.

# Bauxite in Australia's Northern Territory

Bauxite and alumina production and value in NT (2000–2022)



**Total production**  
335 million tonnes



**2023–24 production**  
12.6 million tonnes



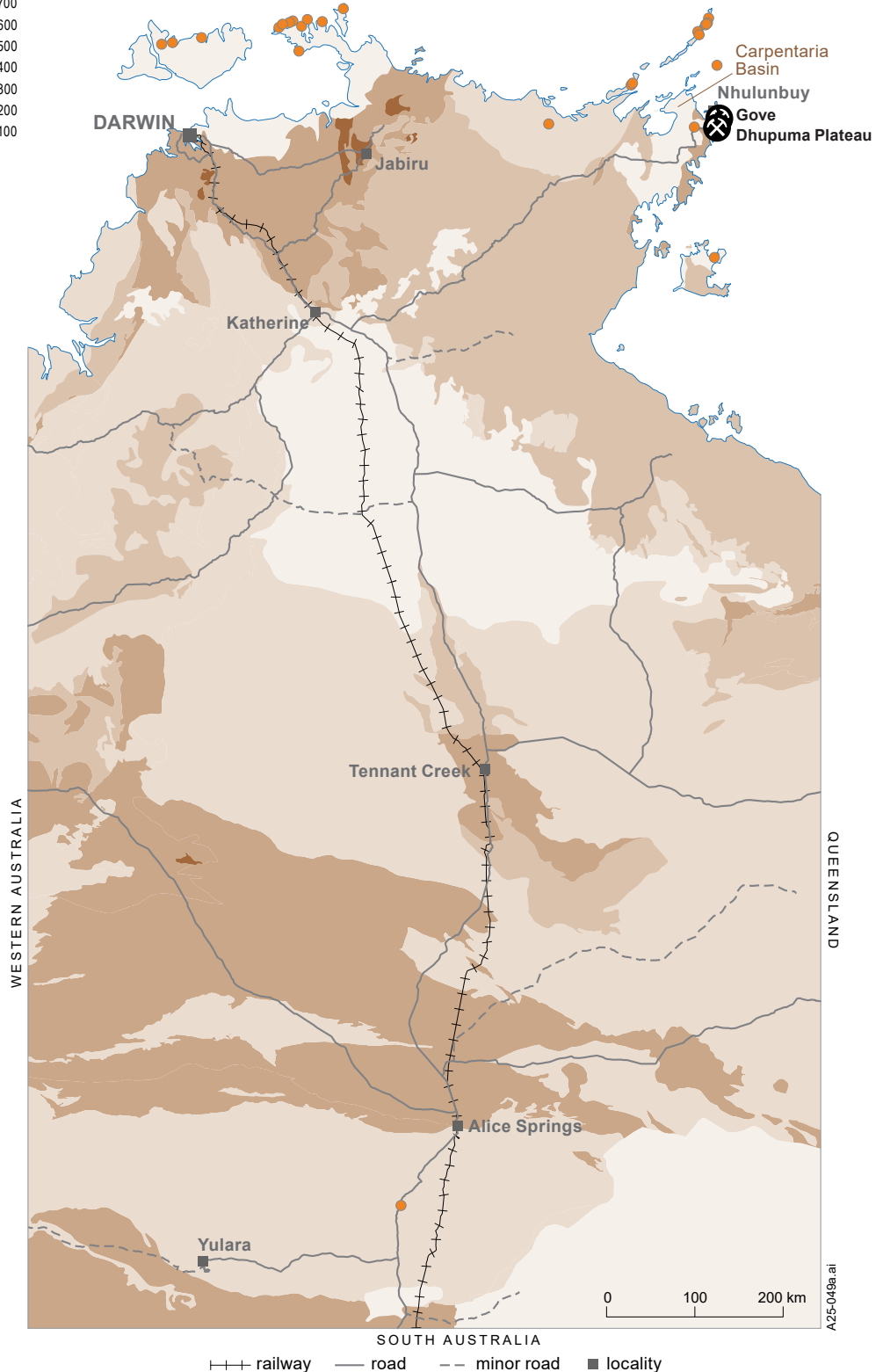
**Remaining JORC resources**  
67.4 Mt @ 49.7% Al<sub>2</sub>O<sub>3</sub>



**Value of production in 2023–24**  
\$702 million



**Production ranking in Australia**  
3<sup>rd</sup>



- operating mine
- in construction
- in approvals process
- under feasibility
- prospect
- bauxite occurrence
- Mesozoic–Cenozoic
- Neoproterozoic–Palaeozoic
- Palaeo–Mesoproterozoic basins
- Palaeo–Mesoproterozoic orogens
- Archaean

February 2025