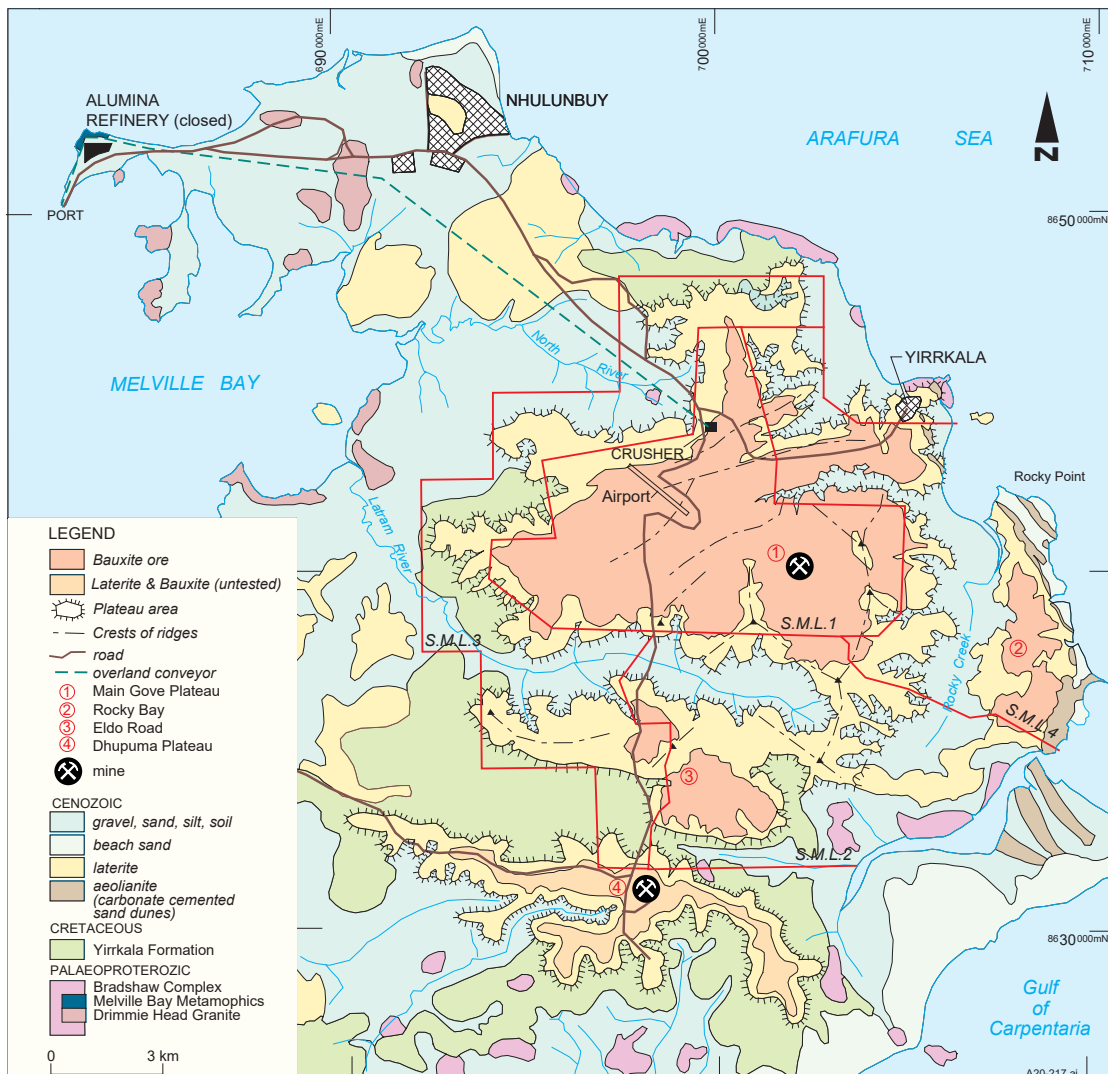




- Two bauxite mines are in operation near Nhulunbuy in eastern Arnhem Land.
- Gove Operations has been in production since 1971. Alumina production at Gove ceased in 2014, with the operation reverting to direct export of bauxite.
- Gibbsite bauxite at Gove averages 3.7 m in thickness and occurs in deeply lateritised, dissected plateau remnants overlying the Cretaceous Yirrkala Formation.
- The Dhupuma Plateau mine opened in 2017, and is owned and operated by the Aboriginal owned Gulkula Mining Company.
- Numerous additional bauxite occurrences occur along the northern coast of Arnhem Land and adjacent islands.

Operating mines

Geological Province	Name	Annual Production	Resource	Company
Carpentaria Basin	Dhupuma Plateau	Average production rate of 0.7-0.8 million tonnes per annum	JORC resource not publicly announced	Gumatj Corporation Ltd
	Gove	11.6 Mt bauxite (2023)	67.4 Mt @ 49.7% Al_2O_3	Rio Tinto

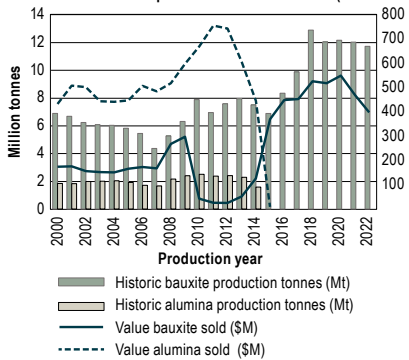


Simplified geology of Gove bauxite deposits.

Reference: Northern Territory Geological Survey, Report 13.

Bauxite in Australia's Northern Territory

Bauxite and alumina production and value in NT (2000–2022)



Total production
335 million tonnes



2023–24 production
11.2 million tonnes



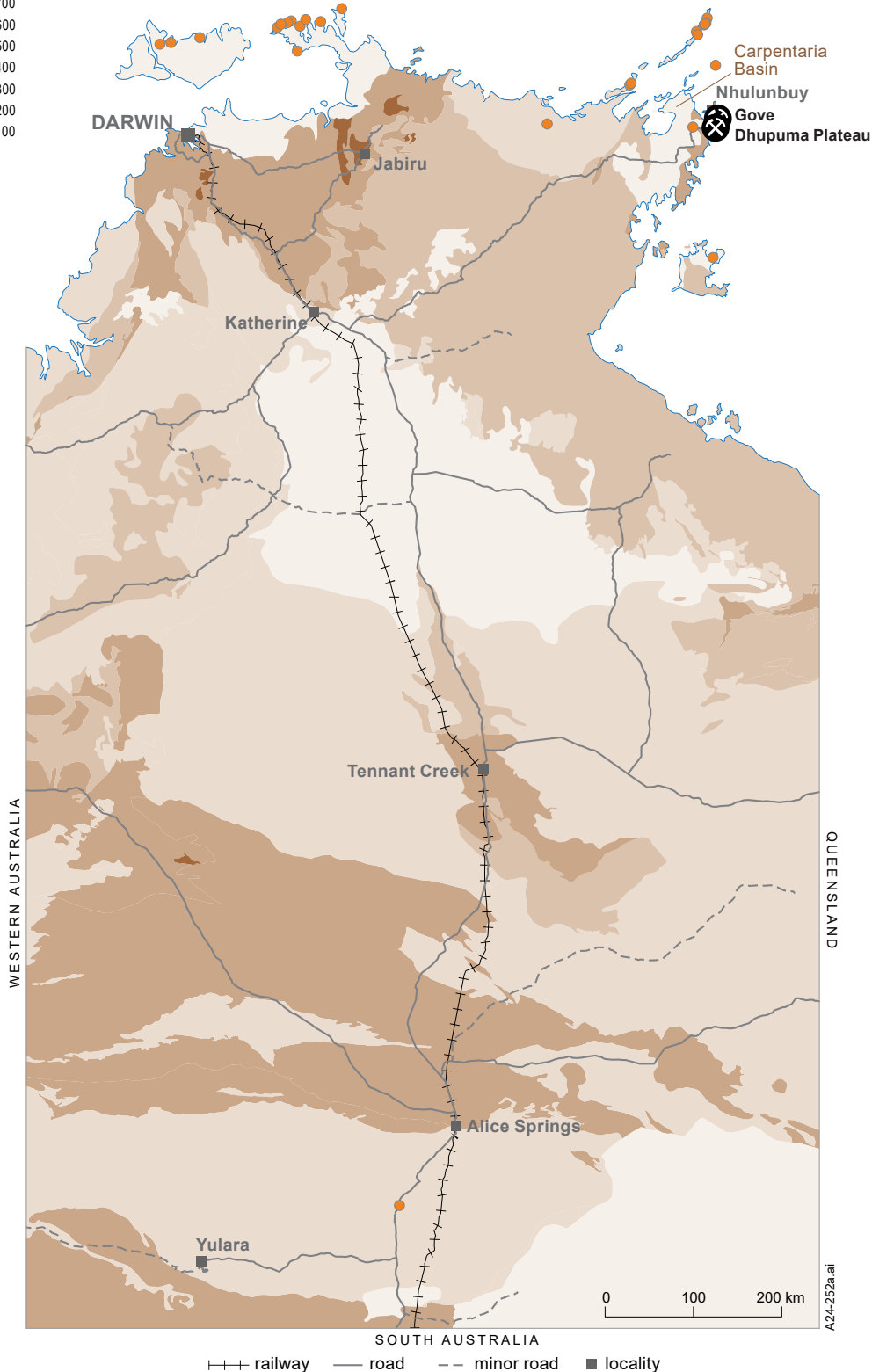
Remaining JORC resources
67.4 Mt @ 49.7% Al₂O₃



Value of production in 2023–24
\$702 million



Production ranking in Australia
3rd



- operating mine
- in construction
- in approvals process
- under feasibility
- prospect
- bauxite occurrence
- Mesozoic–Cenozoic
- Neoproterozoic–Palaeozoic
- Palaeo–Mesoproterozoic basins
- Palaeo–Mesoproterozoic orogens
- Archaean

November 2024