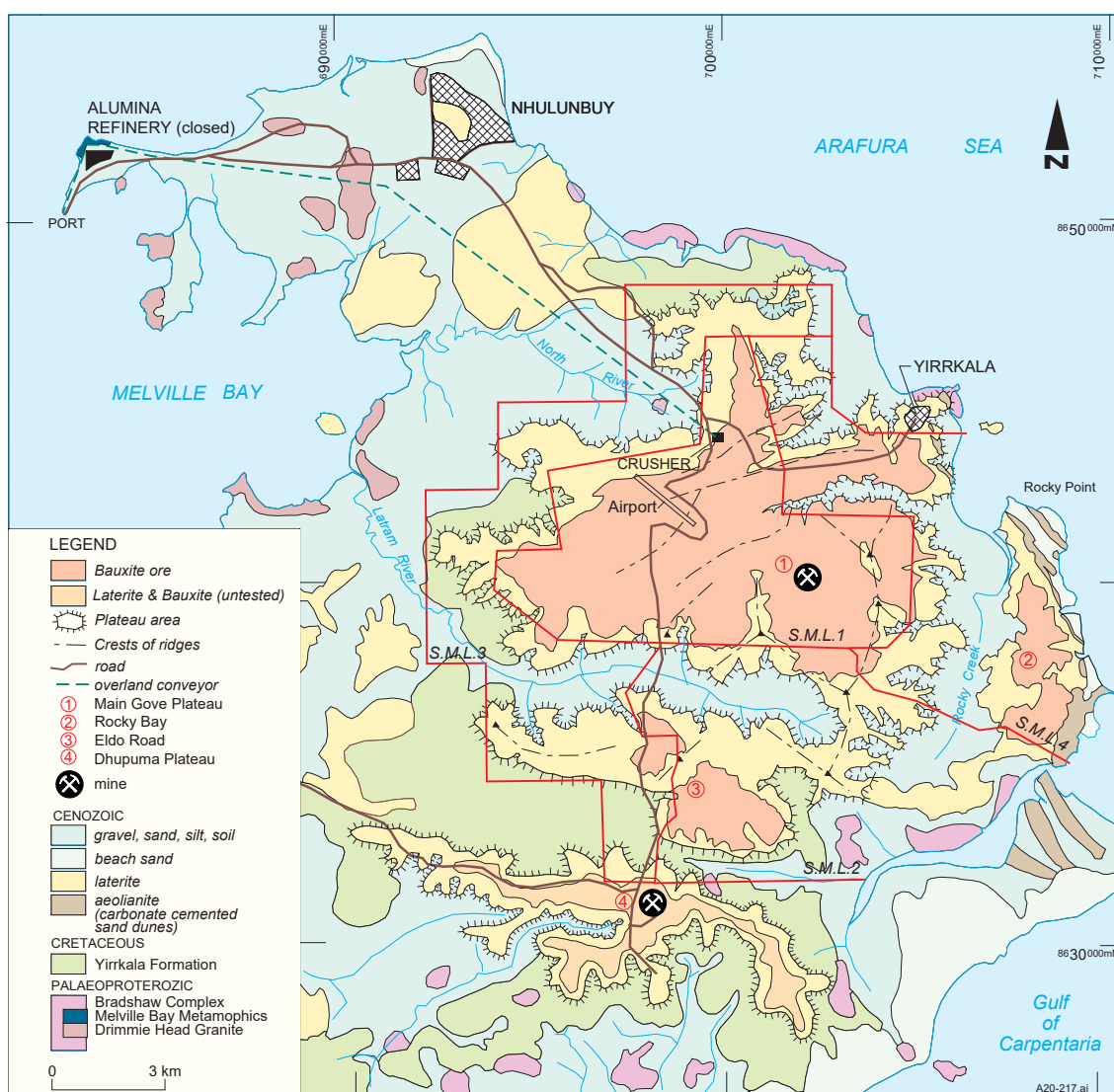




- Two bauxite mines are in operation near Nhulunbuy in eastern Arnhem Land.
- Gove Operations has been in production since 1971. Alumina production at Gove ceased in 2014, with the operation reverting to direct export of bauxite.
- Gibbsite bauxite at Gove averages 3.7 m in thickness and occurs in deeply lateritised, dissected plateau remnants overlying the Cretaceous Yirrkala Formation.
- The Dhupuma Plateau mine opened in 2017, and is owned and operated by the Aboriginal owned Gulkula Mining Company.
- Numerous additional bauxite occurrences occur along the northern coast of Arnhem Land and adjacent islands.

Operating mines

Region	Mine	Annual production	Resource (inclusive of reserves)	Company
Carpentaria Basin	Dhupuma Plateau	Not publicly available (2022-23)	JORC resource not publicly announced	Gulkula Mining Pty Ltd
	Gove	11.5 Mt bauxite (2022)	68 Mt @ 48.7% Al_2O_3	Rio Tinto

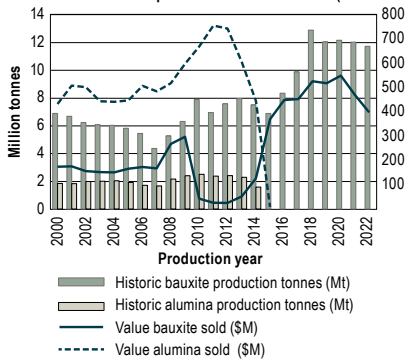


Simplified geology of Gove bauxite deposits.

Reference: Northern Territory Geological Survey, Report 13.

Bauxite in Australia's Northern Territory

Bauxite and alumina production and value in NT (2000–2022)



Total production
335 million tonnes



2022–23 production
11.2 million tonnes



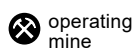
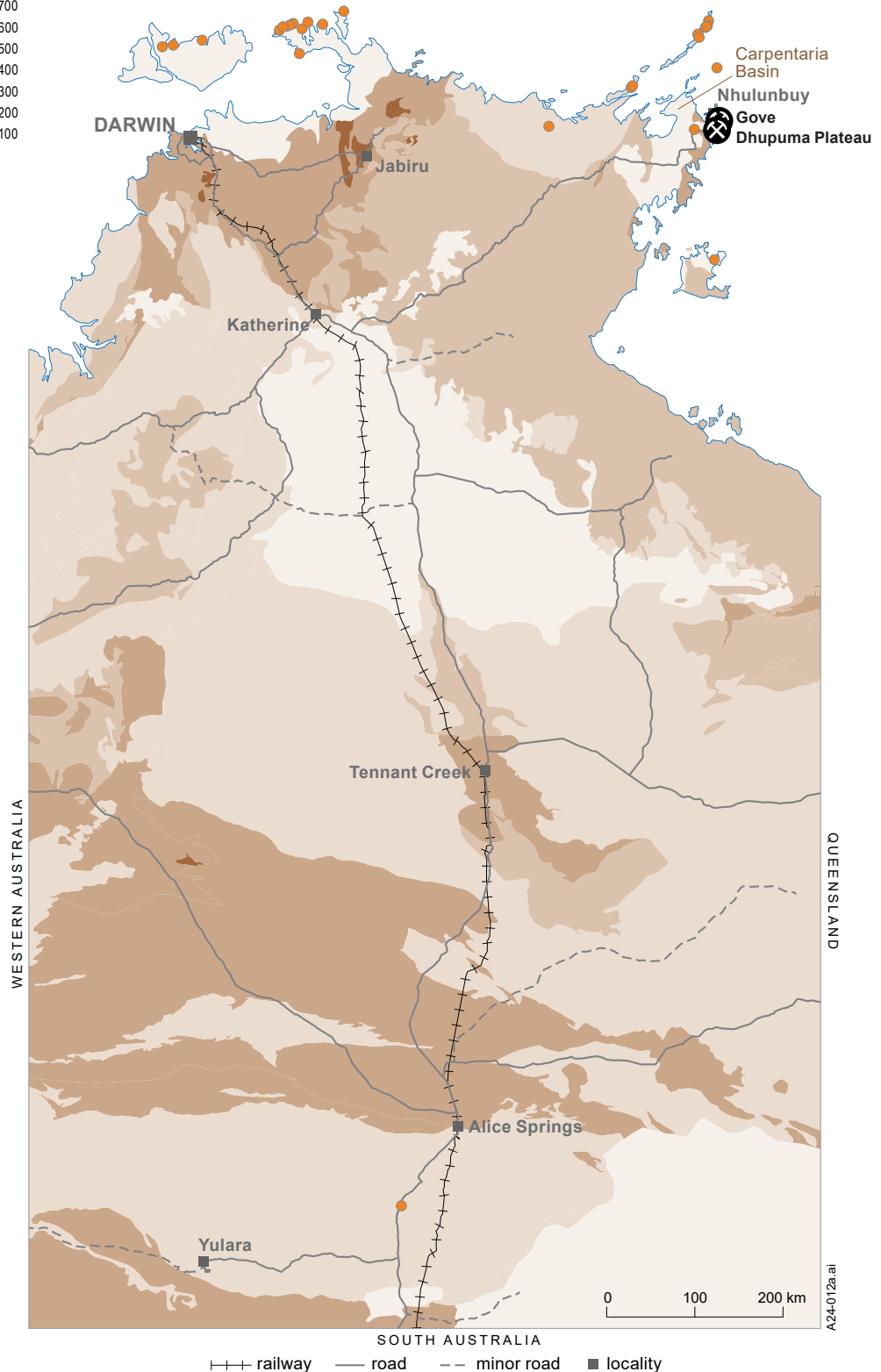
Remaining JORC resources
>68 Mt @ 48.7% Al_2O_3



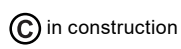
Value of production in 2022–23
\$421 million



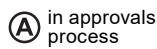
Production ranking in Australia
3rd



operating mine



in construction



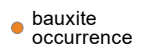
in approvals process



under feasibility



prospect



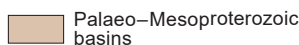
bauxite occurrence



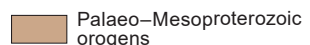
Mesozoic–Cenozoic



Neoproterozoic–Palaeozoic



Palaeo–Mesoproterozoic basins



Palaeo–Mesoproterozoic orogens



Archaean

February 2024