



- Georgina Basin is a world-class sedimentary phosphorite province.
- Wonarah and Ammaroo are Australia's largest undeveloped phosphate deposits.
- Near-surface, high-grade discoveries in Georgina Basin (eg Ammaroo) highlight potential for further large discoveries.
- Opportunities for near-term DSO phosphate rock operations with potential for production of yellow phosphorus, phosphoric acid, fertiliser products, and lithium-iron-phosphate cathode active materials.
- Brines associated with salt-lakes in central Australia have potential for potash production, as potassium sulphate or schoenite.

## Developing projects

### Approvals in place

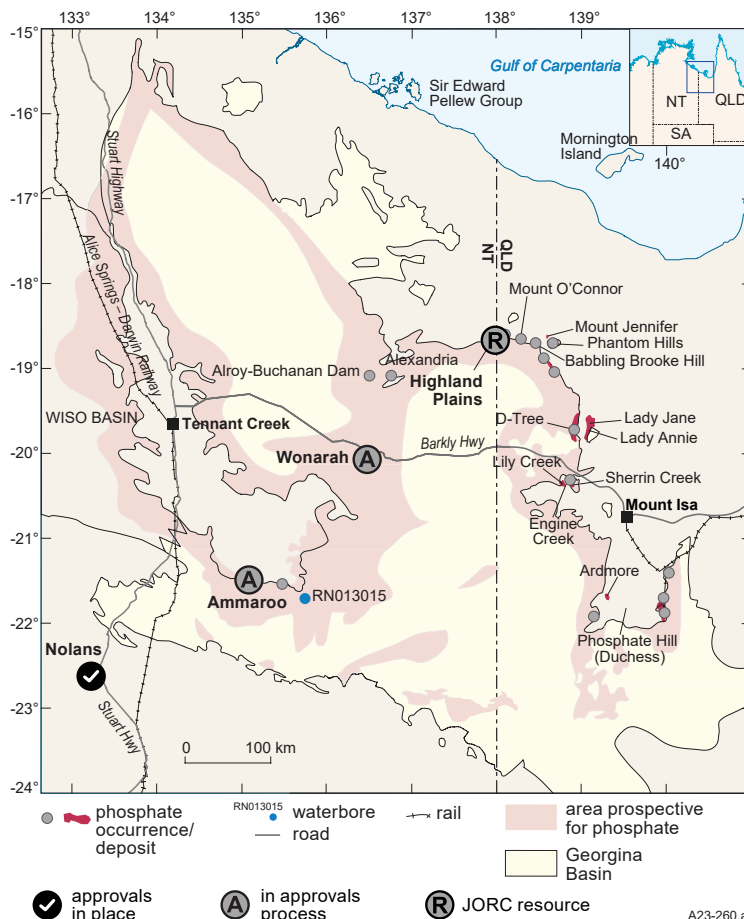
Geological Province	Name	Resource	Company
Aileron Province	Nolans	56 Mt @ 2.6% REO, 11% $P_2O_5$	Arafura Rare Earths Ltd

### In approvals process

Geological Province	Name	Resource	Company
Georgina Basin	Ammaroo	1145 Mt @ 14% $P_2O_5$ (10% cut-off); 338 Mt @ 18% $P_2O_5$ (15% cut-off)	Verdant Minerals Ltd
	Wonarah	66 Mt @ 30% $P_2O_5$ (27% cut-off); 812 Mt @ 18.1% $P_2O_5$ (15% cut-off)	Avenira Ltd

## JORC resource

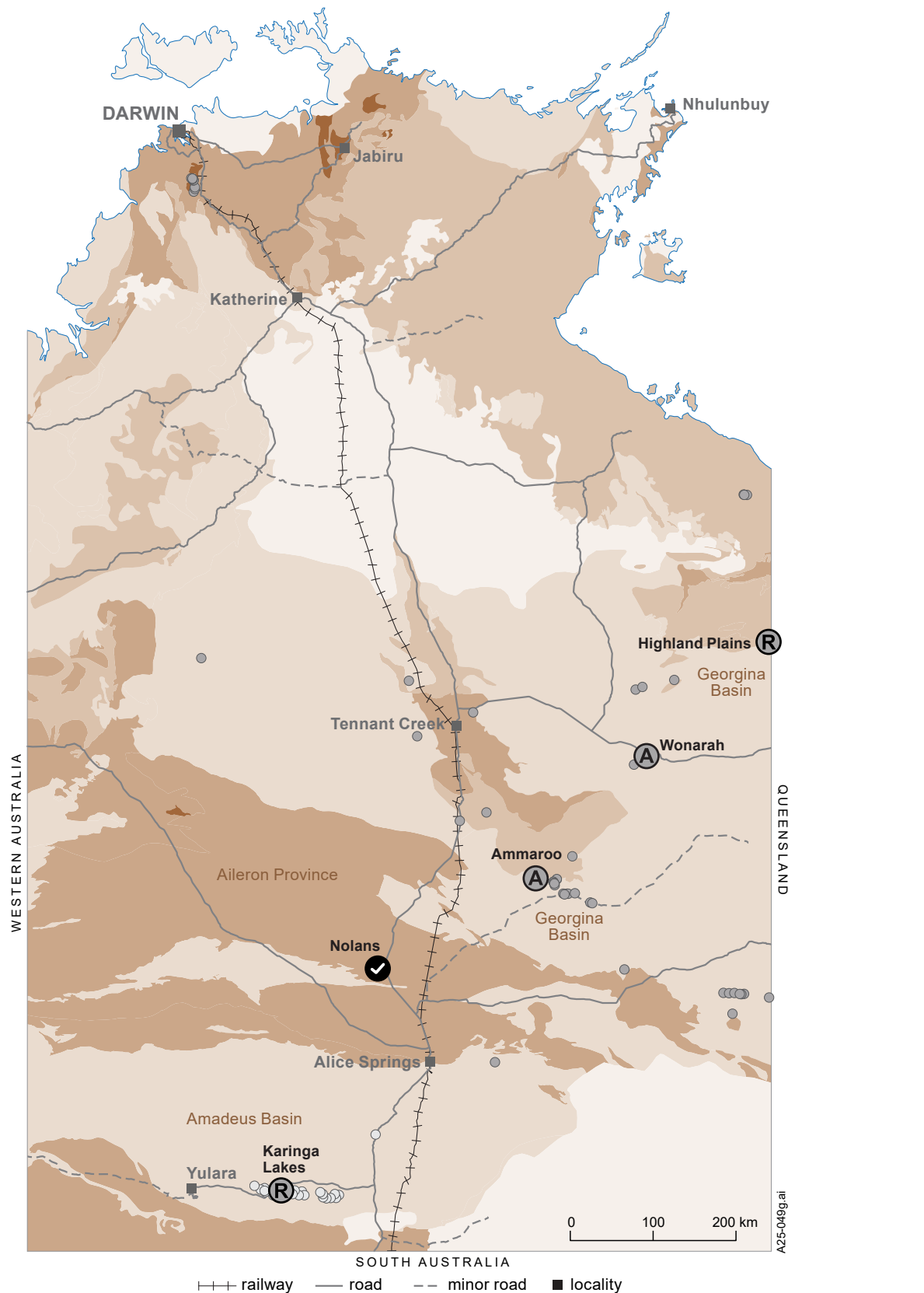
Geological Province	Name	Resource	Company
Amadeus Basin	Karinga Lakes	129 Mt @ 0.463% $K_2O$ (in-situ brine resource)	No current operator
Georgina Basin	Highland Plains	53 Mt @ 16% $P_2O_5$	Gibb River Diamonds Ltd



Phosphate deposits, occurrences and prospective areas in Georgina Basin.

Reference: After NTGS Special Publication 5: Chapter 28.

# Phosphate, Potash in Australia's Northern Territory



February 2025