

The Territory's large lithium resources continue to grow.

The Territory has lithium resources and exploration potential associated with spodumene-bearing pegmatites. The Territory's Bynoe pegmatite field of the Pine Creek Orogen, near the port of Darwin, hosts Core Lithium Ltd's Finniss Operations, currently in care and maintenance.

Lithium in the Bynoe pegmatite field is hosted within LCT (lithium–caesium–tantalum) pegmatites that range from narrow veins to broad lozenge-shaped bodies up to 500 meters long and 60 meters wide. To date, lithium resources have been defined for 10 individual pegmatite-hosted deposits in this field. Ongoing exploration by multiple companies is expected to significantly grow the resource base in the Bynoe pegmatite field. Some companies actively exploring for lithium in the Bynoe pegmatite field and in the Pine Creek Orogen include [Lithium Plus Minerals Ltd](#), [Charger Metals NL](#), [Core Lithium Ltd](#), [DeSoto Resources Ltd](#), [Evergreen Lithium Ltd](#), and [Ragusa Minerals Ltd](#).

Numerous earlier stage lithium exploration projects are underway in the Barrow Creek and Anningie pegmatite fields of the Aileron Province, Central Australia. Some companies exploring in this area include [Australasian Metals Ltd](#), [Core Lithium Ltd](#), [Eastern Metals Ltd](#), [Encounter Resources Ltd](#), [Lithium Springs Ltd](#), [Oceana Lithium Ltd](#) and [Tivan Ltd](#). Indications of new spodumene-bearing pegmatites in the Reynolds Range, west of Ti Tree, have recently been announced by [iTech Minerals Ltd](#) (in joint venture with Prodigy Gold NL).

Care and Maintenance

Geological Province	Name	Resource	Company
Pine Creek Orogen	Finniss ¹	48.2 Mt @ 1.26% Li ₂ O (global resource)	Core Lithium Ltd

¹ Grants open pit currently in care and maintenance

Developing projects

Approvals in place

Geological Province	Name	Resource	Company
Pine Creek Orogen	BP33	10.5 Mt @ 1.53% Li ₂ O (incl. in Finniss Global Resource)	Core Lithium Ltd

JORC resource

Geological Province	Name	Resource	Company
	Lei	4.09 Mt @ 1.43 % Li ₂ O	Lithium Plus Minerals Ltd
	Grants (Finniss)	2.32 Mt @ 1.45% Li ₂ O	
	Carlton (Finniss)	6.34 Mt @ 1.30% Li ₂ O	
	Lees (Finniss)	11.2 Mt @ 1.14% Li ₂ O	
	Ah Hoy (Finniss)	4.64 Mt @ 1.31% Li ₂ O	
Pine Creek Orogen	Booths (Finniss)	3.24 Mt @ 1.02% Li ₂ O	
	Penfolds (Finniss)	1.36 Mt @ 1.24% Li ₂ O	Core Lithium Ltd
	Hang Gong (Finniss)	3.46 Mt @ 1.16% Li ₂ O	
	Sandras (Finniss)	1.73 Mt @ 0.89% Li ₂ O	
	Bilatos (Finniss)	1.92 Mt @ 1.03% Li ₂ O	
	Seadog (Finniss)	1.41 Mt @ 1.81% Li ₂ O	

Exploration results

Geological Province	Name	Resource	Company
	Finniss	BP33: 90.17 m @ 1.80% Li ₂ O Blackbeard: 63 m @ 1.67% Li ₂ O Ah Hoy: 40 m @ 1.42% Li ₂ O Seadog: 8 m @ 1.3% Li ₂ O	Core Lithium Ltd
Pine Creek Orogen	Lei	50 m @ 1.83% Li ₂ O	Lithium Plus Minerals Ltd
	Perseverance	19 m @ 1.58% Li ₂ O	
	Enterprise	5 m @ 1.13% Li ₂ O	Charger Metals Ltd



Download NTGS lithium information
resourcingtheterritory.nt.gov.au



Lithium Plus Minerals Ltd | ASX:LPM
<https://lithiumplus.com.au/>

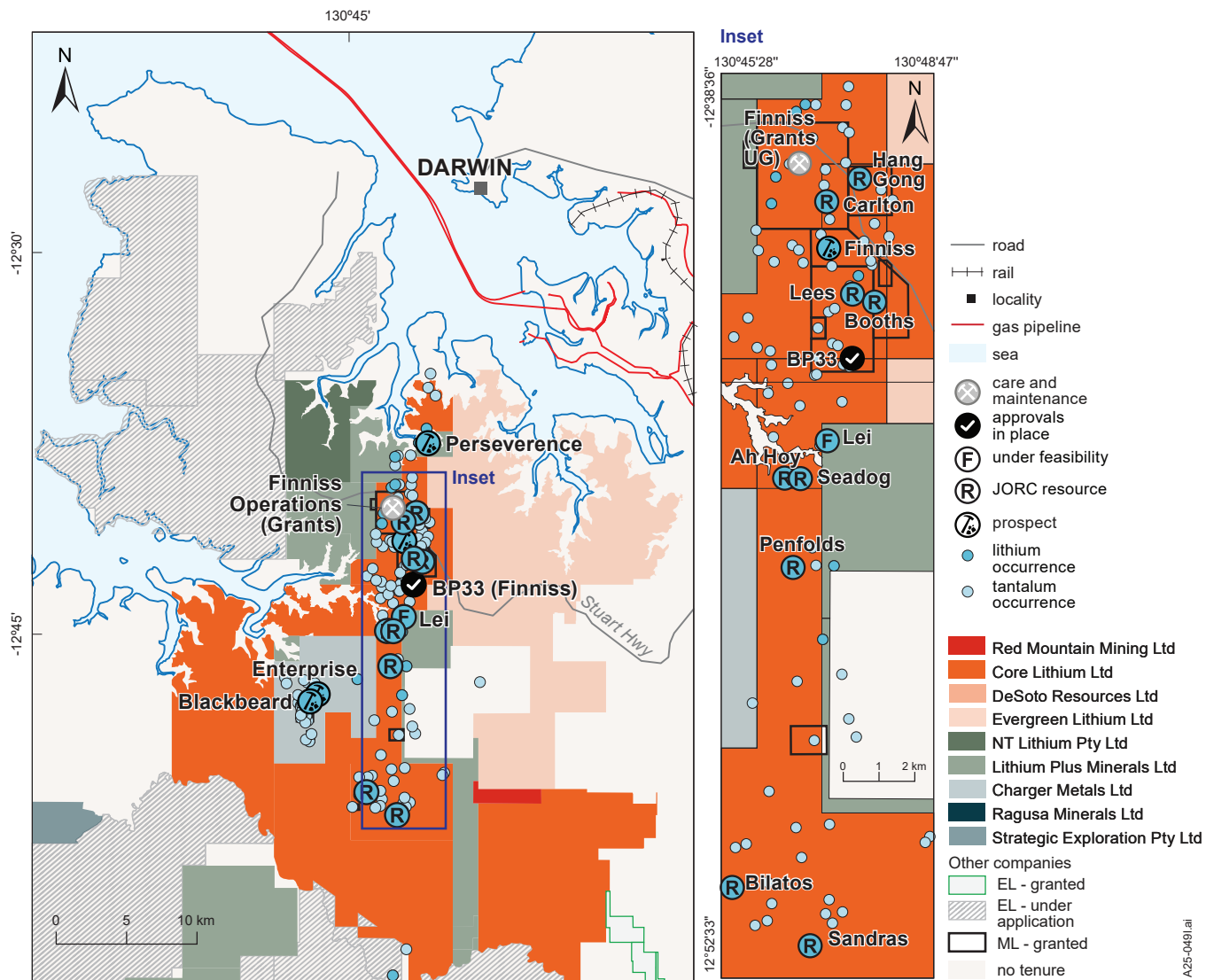
Lithium Plus Minerals have a large holding in the Bynoe pegmatite field and are developing plans quickly for the Lei deposit. A maiden JORC Mineral Resource of 4.09 Mt @ 1.43% Li₂O was announced in December 2023. In June 2024, the company applied for a Mining Lease over Lei and announced entering a non-binding MOU with Canmax for 50% offtake of spodumene DSO and concentrate. Recent metallurgical test work confirms Lei deposit ore is amenable to multiple processing routes. An extensive exploration program is planned for 2024 in parallel with an early-stage economic assessment of the potential development of the Lei deposit.



Maiden JORC Mineral Resource
4.09 Mt @ 1.43% Li₂O

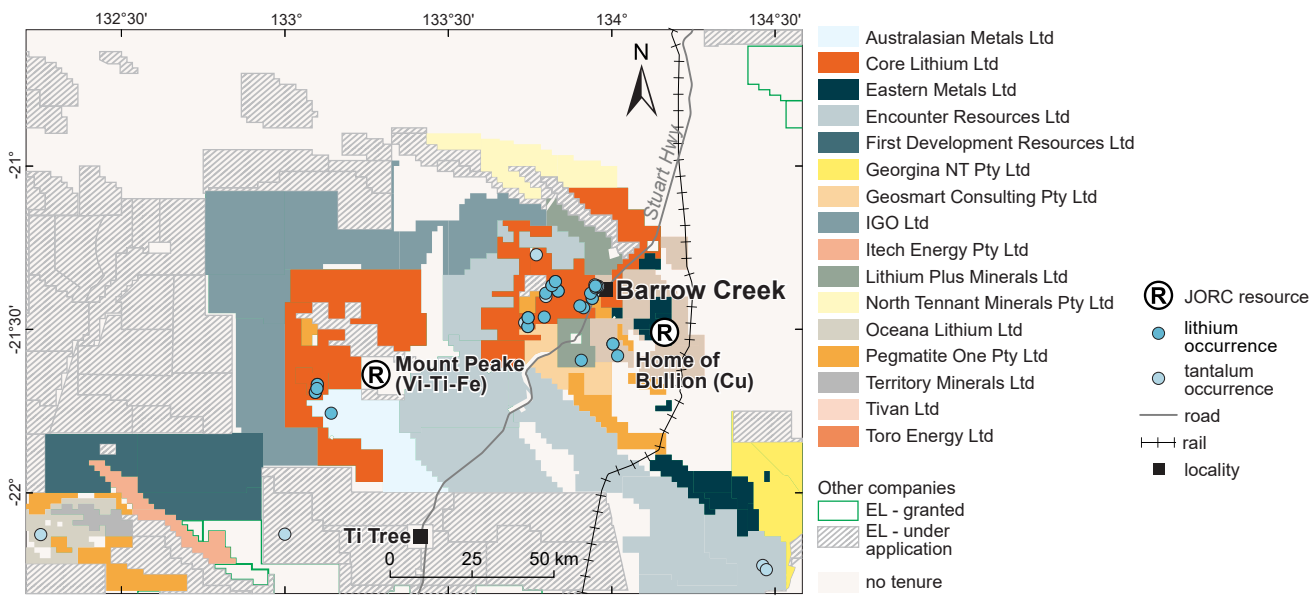


Non-binding agreements in place



A25-0491.ai

Figure 1. Bynoe pegmatite field Exploration Licences (ELs) granted & under application.



A24-252k.ai

Figure 2. Barrow Creek and Anningie pegmatite fields Exploration Licences (ELs) granted & under application.